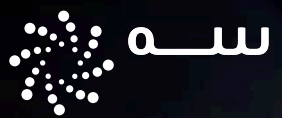
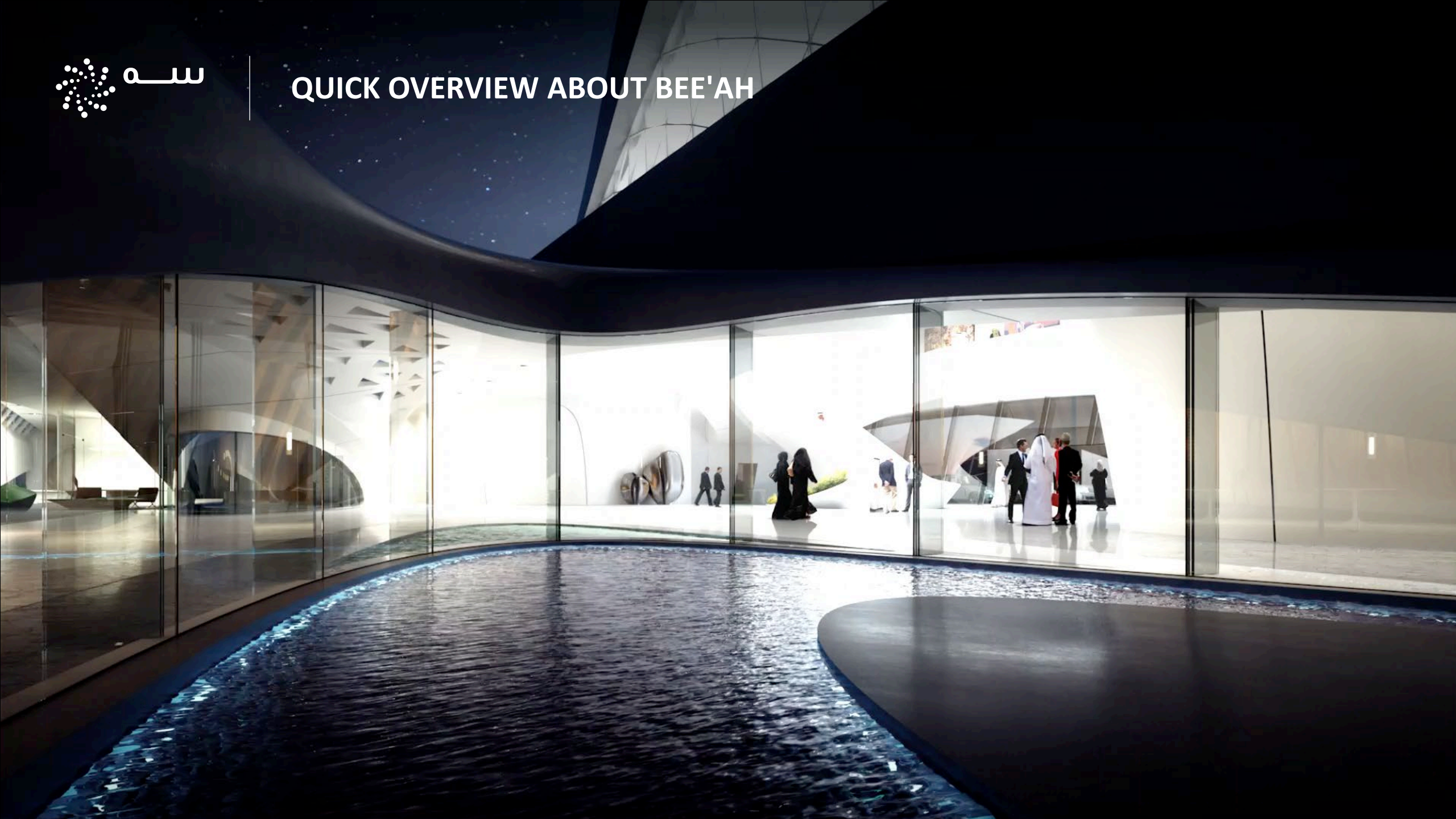




WE ARE THE FUTURE



QUICK OVERVIEW ABOUT BEE'AH








bee'ah

waste

management



MUNICIPAL COLLECTION & CLEANSING



Bee'ah Tandeef is servicing municipal contacts throughout the UAE:
Sharjah city and the municipalities of Dibba Al Hisn, Kalba, Al Madam, Mleiha, Hamriya, Khorfakkan,
Al Batayeh and Al Dhaid.
Emirate of Abu Dhabi: Lot 1
Emirate of Ajman.



SERVING ICONIC LANDMARKS ACROSS THE UAE

BURJ KHALIFA



INCREASING EFFICIENCY THROUGH VEHICULAR GREEN TECHNOLOGY



Over 1,850
Vehicles

Hundreds of
electric vehicles

Automated
Route Optimization

OPTIMIZING PERFORMANCE THROUGH SMART BINS



Geo-tagged
Smart Bin Sensors

Solar-powered
Wi-Fi Bins

3-Stream Bins to
Encourage Segregation



800 Tandeef
(8263333)

بيئة
bee'ah
Wishes You
A Greentastic
New Year!

bee'ah.ae

بيئة
تنظف

نحن المستقبل
WE ARE THE FUTURE

معاً لبيئة مستدامة
TOGETHER FOR A SUSTAINABLE ENVIRONMENT



bee'ahsaudia.sa



EGYPT

- Bee'ah commenced waste management and city cleaning operations in Egypt's new Administrative Capital from March 2021
- 80% waste-diversion-from-landfill target
- Serve an expected population of 2 million people in the first phase
- 1,500-strong workforce
- 400 city cleaning and waste management vehicles
- Community recycling initiatives and outreach programmes
- Facilities include refuse-derived fuel facility and medical waste facility



KSA

- Bee'ah won 3 waste management contracts for North, West and East region of Madinah City
- Operations commenced in August 2020
- Bee'ah to serve 70% of Madinah, 1.2 million people
- Support Saudi Vision 2030 for sustainable development
- 3,000-strong workforce
- 488 equipment and vehicles





RECYCLING – RECOVERY - PRODUCTS





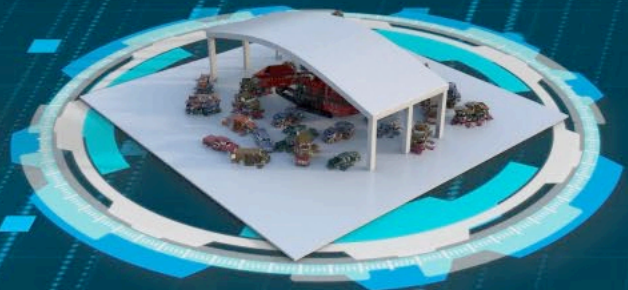
FACILITIES



MATERIAL RECOVERY FACILITY



TYRE RECOVERY FACILITY



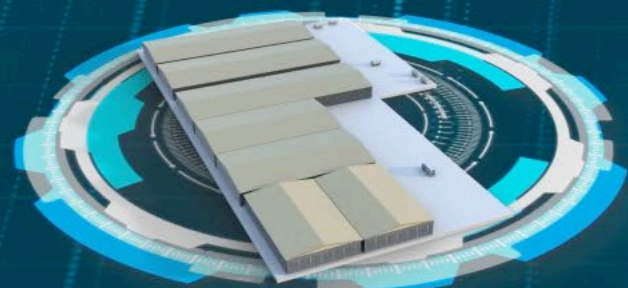
METAL RECYCLING CENTER



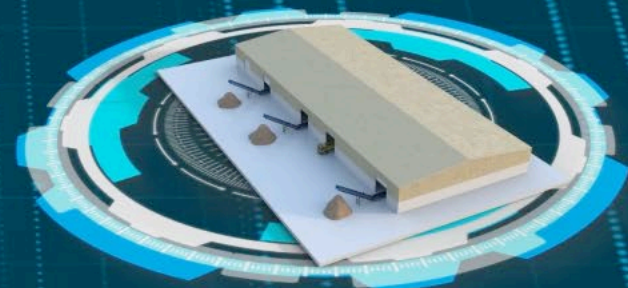
**CONSTRUCTION AND DEMOLITION
WASTE RECYCLING FACILITY**



**INDUSTRIAL WASTE WATER
TREATMENT PLANT**



**ALTERNATIVE RAW MATERIAL
FACILITY**



BIOMASS FACILITY



MATERIAL RECOVERY FACILITY

600,000 TONS
ANNUAL CAPACITY

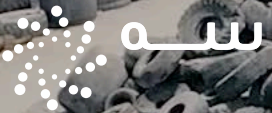
WORLD'S LARGEST
PRODUCER OF RECOVERED PLASTICS

**ONE OF THE
LARGEST**
MRF IN THE WORLD

RETROFITTED WITH TECHNOLOGY FROM
BHS, NIHOT & NRT



MATERIAL RECOVERY FACILITY



TYRE RECYCLING FACILITY

PROCESSES OVER

3 MILLION TYRES

PER YEAR

USES ADVANCED

CRYOGENIC

PROCESSES

100%

RECOVERY RATE



RUBBER RECYCLING PRODUCTS

JOGGING TRACKS

RUBBER TILES



CONSTRUCTION & DEMOLITION WASTE RECYCLING FACILITY

RECOVERY RATE
OF
98%

500,000 TONS
PROCESSED YEARLY

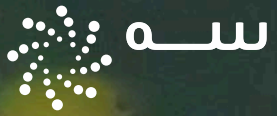
5 GRADES
OF AGGREGATE



METAL SHREDDING & RECYCLING FACILITY

60 SECONDS
TO RECYCLE ONE CAR

SEGREGATING METAL, GLASS & PLASTIC
COMPONENTS FOR RECYCLING



INDUSTRIAL WASTE WATER TREATMENT PLANT

350m OF WASTEWATER
PROCESSED DAILY

PROCESS INCLUDES
PHYSICAL, CHEMICAL,
BIOLOGICAL TREATMENT
& FILTRATION

TREATING INDUSTRIAL & OIL-
CONTAMINATED WASTEWATER

GENERATES CLEAN WATER
FOR IRRIGATION



BIOMASS FACILITY

**Launched during
COVID-19 pandemic**

**Generates alternative fuel
for industrial manufacturing**

**200 tonnes of cellulose
and carbon-based waste
daily**



ALTERNATIVE RAW MATERIALS FACILITY

Element	Value 1	Value 2
Ti	721	143
Cr	0.12	0.01
Mn	23.07	0.19
Fe	0.58	0.03
Co	637	57
Cu	5.45	0.08
Zn	69.77	0.26
Ba1	73	5
Sr	8	4
Zr		

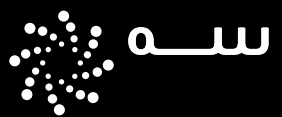
**Bee'ah-
Polygreen joint
partnership
venture**

**Zero-waste process to treat
maritime and hazardous
waste to create Alternative
Raw Materials (ARM)**

**ARM can be fed
into industrial
manufacturing**

**120 tonnes of
alternative raw
materials produced
daily**

**Certified by
DNV GL**



ALTERNATIVE RAW MATERIALS FACILITY



B&A WASTE MANAGEMENT

A BEE'AH & AMBIENTHESIS JOINT VENTURE

B&A Waste Management – A joint venture between Bee'ah and Italian company Ambienthesis, B&A Industrial leverages on the synergy of two leading environmental management entities to provide end-to-end integrated management of industrial waste.

The background of the entire page is a blue-tinted image of several broken plastic bottles and shards of plastic floating in water. The bottles are in various stages of being crushed, with some completely flattened and others partially broken. The water surface is visible with ripples and reflections. In the top left corner, the Evogreen logo is displayed in white, consisting of a stylized 'e' followed by the word 'vogreen'. Below the logo, the text 'A BEEAH + POLYGREEN JOINT VENTURE' is written in a smaller, all-caps font.

evogreen

A BEEAH + POLYGREEN JOINT VENTURE

Evogreen is a joint venture between Bee'ah and Greek-owned Polygreen, that offers innovative marine environmental management solutions. Launched in June 2021, Evogreen addresses a spectrum of maritime waste and pollution issues through oil spill response service; management of distressed vessels, cargo and abandoned containers including recycling or recovery solutions, repair or refurbishment works; green ship recycling and establishing an environmental laboratory.

Evogreen has already established an Alternative Raw Material facility in Bee'ah's Waste Management Complex in Sharjah. The facility is the first in the region to treat maritime waste and marine-related hazardous waste and generate alternative raw materials for industrial use.



LANDFILL MANAGEMENT – ENERGY RECOVERY – SPECIAL DISPOSAL





FROM LANDFILL TO LANDSCAPE: CREATING THE
REGION'S ONLY FULLY ENGINEERED LANDFILL



FROM LANDFILL TO LANDSCAPE: CREATING THE
REGION'S ONLY FULLY ENGINEERED LANDFILL



2008



2018



2023

FROM LANDFILL TO LANDSCAPE: CREATING THE
REGION'S ONLY FULLY ENGINEERED LANDFILL

CONVERTING REDUNDANT
LANDFILLS INTO SOLAR PARKS
TO MAXIMISE THE POTENTIAL
OF LAND RESOURCES AND
RENEWABLE ENERGY

Collection, Treatment and Disposal of Medical Waste

Maximum Infection Control and Documentation

Advanced Autoclave System





ENERGY





EMIRATES WASTE TO ENERGY COMPANY

Bee'ah entered into a strategic partnership with Masdar in 2017 to form the Emirates Waste to Energy Company, which will develop waste-to-energy facilities across the region for zero-waste solutions.



SHARJAH WASTE TO ENERGY FACILITY

UAE's First
waste-to-energy facility

Treating **300,000** tonnes
of nonrecyclable waste yearly

Output of
30 MW



SHARJAH WASTE TO ENERGY FACILITY



Emirates Waste to Energy

أول مصنع في دولة الإمارات لتحويل النفايات إلى طاقة
THE UAE's 1st WASTE TO ENERGY PLANT

مصدر Masdar A MUBADALA COMPANY

بيئة bee'ah



SOLAR LANDFILL PROJECT

Emirates Waste to Energy Company, a Bee'ah-Masdar joint venture, will convert Al Saja'a landfill into a solar farm

Capacity of 120MW power generation

Developed over three phases, first phase due in 2023



WASTE TO HYDROGEN

Chinook Sciences



As part of Bee'ah's renewable energy strategy, the company announced that it will develop the region's first waste-to-hydrogen project in the UAE.

The fuelling station will use green hydrogen generated from the waste-to-hydrogen plant from non-recyclable plastic waste and waste wood. The green hydrogen will be transferred to the an adjacent fuelling station to power hydrogen vehicles.



WASTE TO HYDROGEN



SUSTAINABILITY

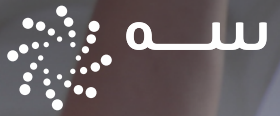


- Sustainability consultancy
- Air, soil and water quality studies
- Waste management research
- Ecological surveys
- Environmental and safety assessments
- Site remediation studies

AIR QUALITY MONITORING



To measure the quality of air in the UAE, Bee'ah has launched an ambient Air Quality Monitoring System and deployed 7 stations across strategic points in the country.



EDUCATION PROGRAMS





VENTURES





Transformation Catalyst

With a vision to create digitally empowered societies, Bee'ah's digitalization venture EVOTEQ provides innovative and transformative digital solutions and platforms to governments and enterprises.

EVOTEQ enables the digital transformation journey for customers through advisory and partnerships, to transform companies from the inside out, enabling improved wellbeing, performance and happiness. Delivering next-generation technologies for digital transformation

EVOTEQ's key offerings are:

- Smart Transformation through collaboration, consultancy and design
- Smart Platforms for track-and-trace technologies, smart buildings and cities

Delivering next-generation technologies for digital transformation:

Digital Transformation



Digital Platforms



Asset Tracking



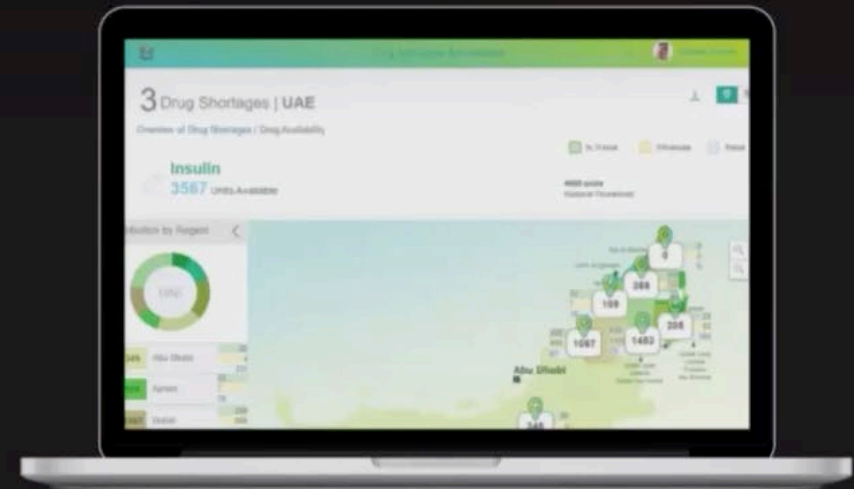
Transportation



Smart Building



A transformative digital application developed by Evoteq, SmartTrack, is a revolutionary application that features a track and trace system, to monitor and fortify all strategic points of distribution in global supply chains.



A digital globe with a network overlay of white and blue lines and dots, set against a dark blue background with a grid of light blue dots.

re.life

RETHINK WHAT'S POSSIBLE

re.life



VISION

Enabling a better life through
a digital ecosystem



MISSION

To empower citizens and
businesses to make better
decisions through innovative
digital platforms.

re.life

market

A virtual marketplace for business-to-business buying and selling of recovered commodities.

The trading of recyclables, redundant inventory or scrapped goods can be a protracted, negotiation-heavy process, with middleman costs an added business expense.

re.life market is an app-based virtual marketplace that connects a global network of business-to-business buyers and sellers looking to transform unwanted goods into profitable commodities.

Benefits



Cuts out the middleman



100% transparent
market-driven
bidding process



Quality inspections



Logistics service
support



Eliminates
Unnecessary
paperwork

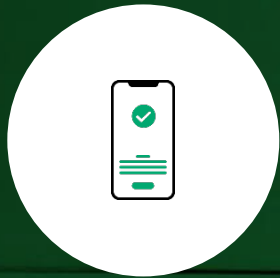
re.life collect

An easy-to-use mobile app, re.life collect offers instant, affordable convenience for the door-to-door transportation of bulky and heavy goods as well as sustainable waste disposal services.

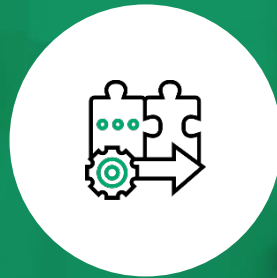
Designed for residents and businesses who want to move heavy, bulky items from one location to another.

re.life collect connects consumers to a verified community of moving and transportation companies via a smart, streamlined on-demand digital solution.

Benefits:



On-demand or
pre-booking service available



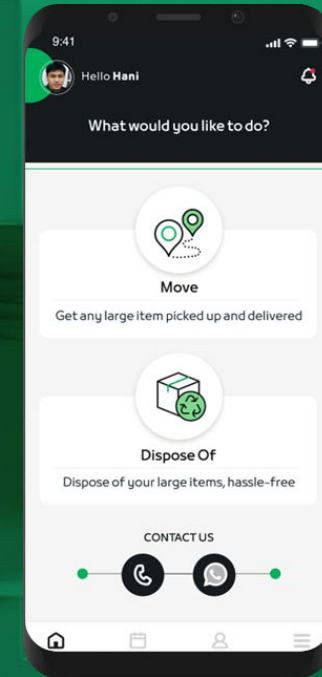
Seamless process



Affordable rates



Live tracking of orders

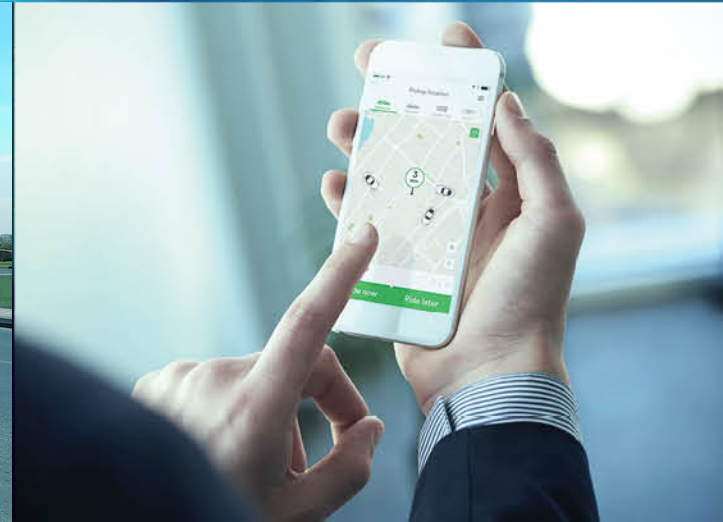




SUSTAINABLE TRANSPORTATION



A joint venture between Bee'ah and Crescent Enterprises, ION is leading innovations in green mobility, driving on-demand availability in multi-modal, inter-urban, transport networks. Consistently ensuring high quality and product safety in all applications. ION is creating a zero-emissions transport infrastructure in the MENA region and beyond.

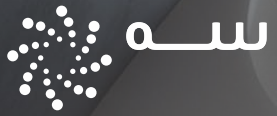




NEW BEE'AH HEADQUARTERS

Designed by Zaha Hadid Architects

Net-Zero Energy Building Powered by
Renewable Energy



NEW BEE'AH HEADQUARTERS

Developed by Johnsons Control,
Microsoft & EVOTEQ

AI-integrated Office of the
Future Technologies

Sets blueprint for smarter, more
sustainable cities of the future

Thank you



WE ARE THE FUTURE